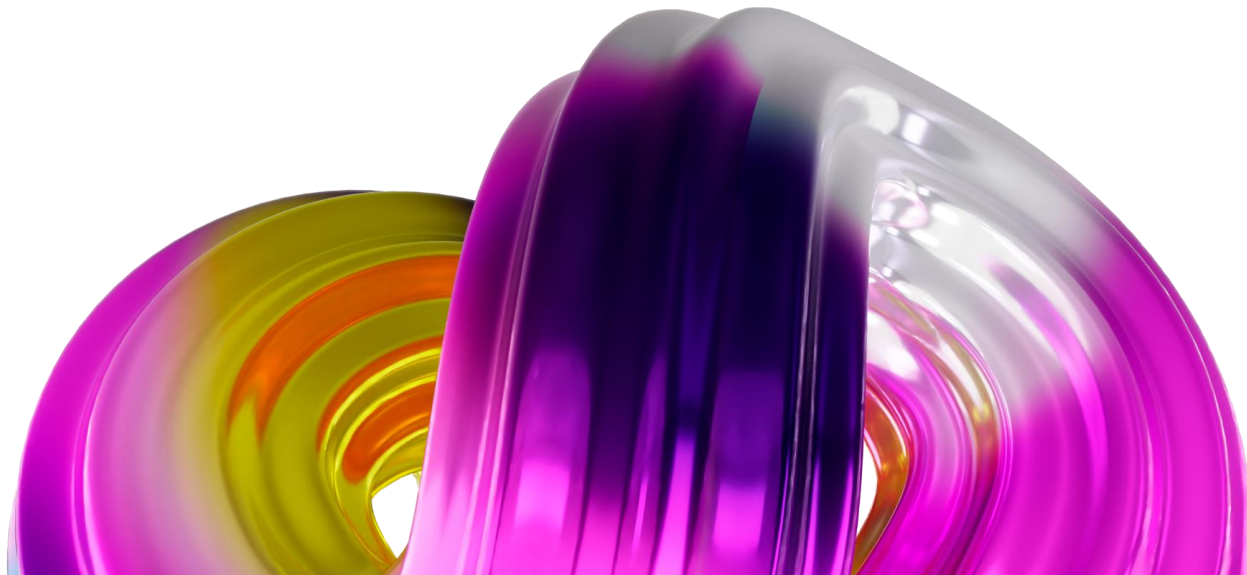


Crypto Legend

Join the accessible blockchain-based earning opportunity.



About Us

At **Crypto Legend**, we believe that extraordinary success should not require extraordinary means. That's why we've created a powerful, transparent, and inclusive business platform designed to transform lives—starting with just a low-cost entry fee.

We are not just a network; we are a movement with a mission. Our goal is to raise the standard of living for individuals around the world by offering a genuine opportunity for growth—financially, personally, and socially. Whether you're a student, a homemaker, or someone seeking a second income, Crypto Legend opens the door to unlimited possibilities with just a small start.

Our team is constantly innovating with futuristic plans tailored for long-term impact. From international travel rewards to career development resources, our ecosystem is built to support and uplift every member of our growing network.

We truly believe: 👉 **"With a small start, anyone can become a millionaire."**

So if you've been waiting for the right time, the right opportunity, or the right platform—this is it. Join us at Crypto Legend and become part of a community that's turning ambition into achievement, and vision into reality.

Crypto Legend — Live like a legend. Grow like a crypto.

Affordable cost of \$15 USDT (BEP20)

Crypto Legend allows users to join the network with a minimal investment of just \$15 USDT. This low entry fee makes it one of the most accessible platforms for individuals looking to enter the blockchain space and earn through innovative systems.





Accessibility in blockchain-based earning systems

The platform is designed with inclusivity in mind, enabling participants from diverse financial backgrounds to engage. This level of accessibility promotes wider participation and enhances community growth, allowing users to build their networks without substantial financial commitments.



Low barriers for new users



With its low entry cost, Crypto Legend lowers the barriers for new users entering the blockchain earning landscape. This simplicity encourages more individuals to consider blockchain opportunities, leading to a more robust and interconnected community.



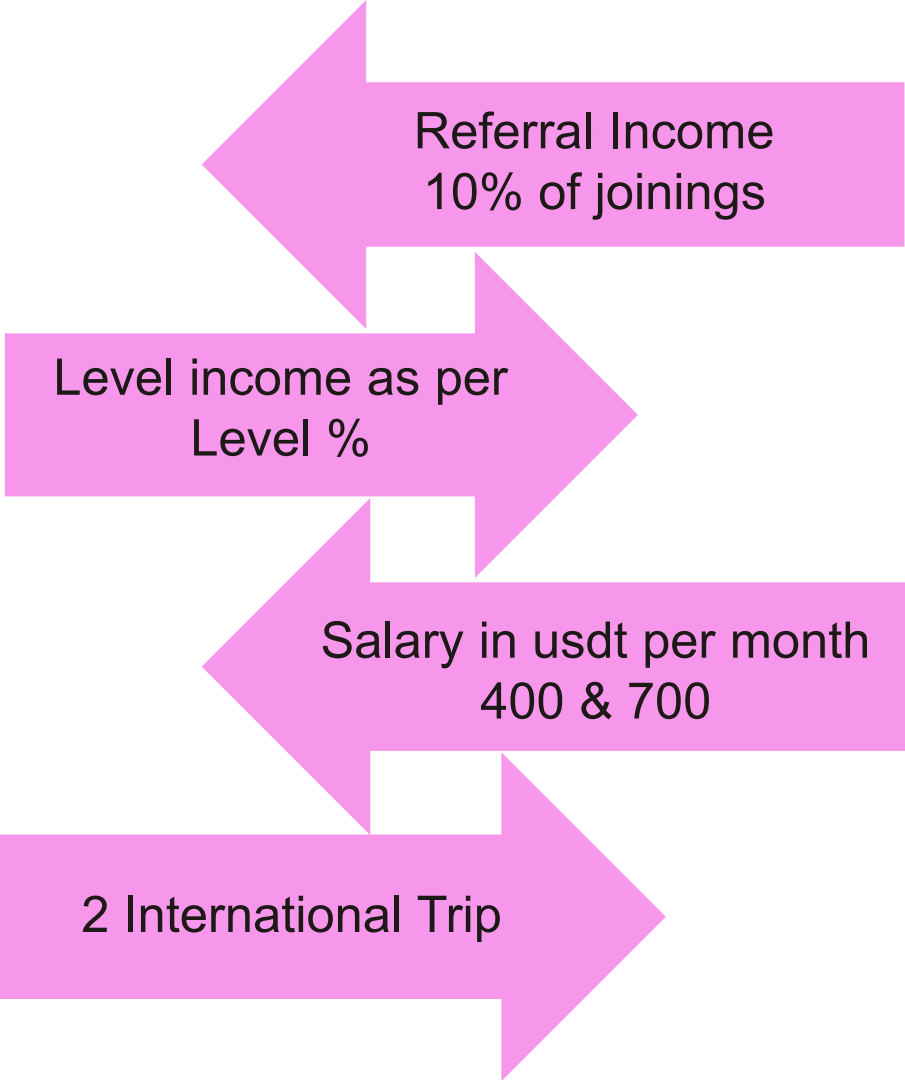
Business Structure

02

- ◆ Low Cost Entry Fee Start from \$15 to Max \$1000
- ◆ Referral Income 10% of joining's &
Re-top up benefit to the sponsor ID
- ◆ No Binary Restriction After 2nd Level
- ◆ Level Income.
- ◆ Salary Income
- ◆ Rewards
- ◆ Direct Transfer to your wallet.
- ◆ Joining With Referral Link



PLAN		
Level	Income	Level Benefits
Spark Level1	25%	Level Income
Rise Level 2	15%	Level Income
Blaze Level 3	10%	Team Joining income
Titan Level 4	8%	Team Joining income
Orbit Level 5	6%	Team Joining income
Nova Level 6	5%	Team Joining income
Zenith Level 7	4%	International Tour
Legacy Level 8	3%	International Tour for the Couple
Crown Level 9	2%	Salary 400 USDT
Legend Level 10	1%	Salary 700 USDT



Rewards

◆ Bonus 200USDT

- 200 USDT on Complete 5th level within 45.

◆ International Tour 1

Malaysia or Thailand.

◆ International Tour 2

- Dubai (For couple)

◆ Salary income

- Salary income Per month \$400 & \$1000.

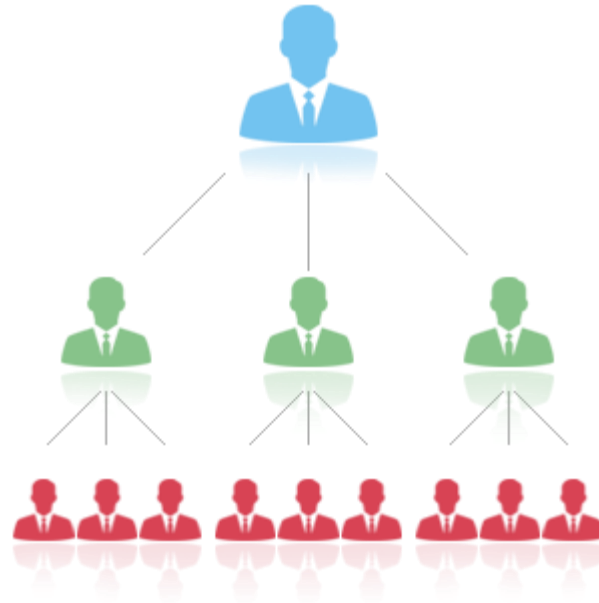
Note:-

- Reward Can be Redeemable for With the Payout.

Conditions Apply



Binary business model for increased earning potential



The Binary business model utilized by Crypto Legend maximizes potential earnings by encouraging a balanced distribution of members across three legs. This structure enhances the ability for users to earn through multiple streams, as both legs contribute to the overall success and revenue generation within the system.

Pairing commissions for balanced growth



In the Binary structure, members earn pairing commissions that incentivize the development of both legs. Successfully pairing bonuses occur when members balance their efforts between the A+B+C till **second level only**, thereby promoting sustainable growth and motivating users to engage more deeply with the network.

First two level completions unlock the system after that Income continues based on member growth



Mechanics of the binary tree system

The binary tree system in Crypto Legend consists of three branches where each member is positioned. Each new joining member is placed on either the left, middle or right side of the tree. The commission structure is triggered once the predetermined thresholds are met, enhancing the intrinsic motivation for members to recruit and support each other.



Payment System

03

USDT Payment System with TX Hash Validation:

- Deposit & Withdrawal via USDT BEP 20 only.
- Id activate only after Successful deposit of USDT.
- Requires TX hash submission for every USDT transaction.
- Enhances transparency and prevents fraud.
- Minimum Withdrawal 20 USDT.
- Withdrawal time between 24 to 72 Hour.





Transparency in financial transactions

The requirement for TX hash submission enhances transparency within the system. By verifying each transaction through its unique hash, users can track their payments and ensure that funds are transferred correctly, fostering trust and confidence in the platform.





Conclusions

In summary, Crypto Legend's innovative payment system and Binary structure create a robust platform that empowers users to maximize their earning potential while ensuring secure and transparent transactions. The integration of accessible entry points, balanced growth incentives, and rigorous fraud prevention measures positions Crypto Legend as a leader in the blockchain earning space.



Terms & Conditions

1. Single joining income at any level will begin only after the completion of the second-level pair.
2. From Level 3 onward, level completion is based on the required number of members.
3. Trip dates will be scheduled based on achieving the minimum required group size or flight availability. The tour country may change depending on current circumstances.
4. Re-top-up is required after earning 10X income. The available top-up options are: 30, 60, 100, 200, 500, and 1000.
5. Once an ID is created, it is non-transferable.
6. To continue receiving the salary benefit, the member's team business increase by 2% every month.
7. After completing the 10th level, the company will decide the loyalty Reward for the Legend Member.
8. Withdrawal charges are 5%.

All right reserved by the company

Thank you!

Do you have any questions?

